

2023-2024 New Drug Update



Co-Sponsored by:

**Pee Dee Area Health Education Center &
Southeastern CME Consultants, LLC**



Presented by:

C. Wayne Weart, Pharm.D., BCPS, FASHP, FAPhA

*Professor Emeritus – MUSC College of Pharmacy & MUSC Department of Family Medicine
Charleston, South Carolina*

Educational Objectives:

- 1) Discuss the new/updated vaccines and CDC recommendations including influenza, COVID-19, RSV and pneumococcal disease.
- 2) Describe the updated 2024 GOLD Guidelines for patients with COPD and 2024 GINA Guidelines for patients with asthma.
- 3) Discuss the updated ACC/AHA/HFSA 2022 revised Guidelines for the Management of Patients with Heart Failure and the 2023 ACC Expert Consensus Decision Pathway on Management of HFpEF.
- 4) Describe the updated efficacy and safety data for the newer weight loss medications
- 5) Discuss the significance and potential treatment of Metabolic Dysfunction-Associated Steatotic Liver Disease (MASLD), the new name for non-alcoholic fatty liver disease (NAFLD).

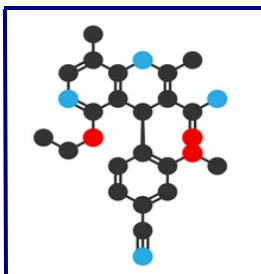
Type of CPE Activity: *Knowledge*

Educational Methods: Lecture presentation with time to answer self-assessment questions and include audience discussion and participation during the CPE activity.

Target Audience: Physicians, Pharmacists, Nurse Practitioners, and Registered Nurses

A completed on-line program evaluation form must be submitted to receive continuing education credit.

Faculty & Program Planning Committee Disclosures: Pee Dee AHEC's conflict of interest policy requires faculty to disclose any real or apparent commercial affiliations related to the content of their presentations/educational materials. Dr. Wayne Weart, Dr. Spencer Morris, Ms. Beejay Parnell, and Ms. Kimberly Morris declare no conflicts of interest or financial interests in any product or service mentioned in this program, including employment, gifts, stock holdings and/or honoraria.



DATE: TUESDAY, NOVEMBER 12, 2024

TIME: Sign In & Dinner: 6:30 - 7:00 P.M.
CE Presentation: 7:00 - 9:00 P.M.

LOCATION:

McLeod Health Pavilion Conference Center
801 East Cheves Street, Florence, SC 29506

* Attend virtually via WebEx – The meeting link can be found in your MY REGISTRATIONS at <https://www.scahec.net/learn/login>.

PRE-REGISTRATION INFORMATION:

Pre-registration is required through Pee Dee AHEC

To pre-register for this continuing education activity visit <https://www.scahec.net/learn/programs/3880>.

TUITION: \$ 40.⁰⁰ for all Participants
Payment is required at time of registration.

Nursing Accreditation Statement: Pee Dee Area Health Education Center is approved as a provider of nursing continuing professional development by the South Carolina Nurses Association, an accredited approver by the American Nurses Credentialing Center's Commission on Accreditation.

Advanced Practice Registered Nurses: This nursing continuing education activity awards 2.0 PH (Pharmacology Hours) upon successful completion.

Registered Nurses: This nursing continuing education activity awards 2.0 contact hours upon successful completion.



*Southeastern Continuing Medical Education Consultants, LLC, is accredited by the Accreditation Council for Pharmacy Education as a provider of continuing pharmacy education. ACPE Universal Activity Number(s) for this program are: **0499-9999-24-006-L01-P**. This continuing pharmacy education activity provides 2.0 contact hours (0.2 CEUs) of continuing education credit for pharmacists. An online program evaluation must be completed to receive continuing pharmacy education credit. *No fractional hours of credit will be given.**