

Pediatric Diabetes Management in the School Setting

**Tuesday,
January 21, 2025**

**Webinar via WebEx
1:30pm - 3:00pm**



This course is designed to equip school nurses with the knowledge and practical skills necessary to support students with diabetes. We will explore the basics of diabetes management, the role of insulin pumps/CGMs in regulating blood glucose levels, and how these devices work. Participants will gain insights into understanding how to help manage students with diabetes, ensuring their health and safety throughout the school day.

LEARNING OBJECTIVES

Upon completion of this program, the participant should be able to:

1. Describe the function of insulin pumps and their advantages over traditional insulin injections.
2. Recognize the need for continuous monitoring and appropriate insulin dosing.
3. Collaborate with healthcare providers to create tailored plans that align with individual student needs.
4. Empower students to manage their condition while ensuring proper support from school staff.

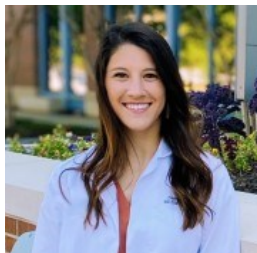


FEE

\$15

Registration Deadline: January 21, 2025 at 1:15pm

INSTRUCTOR



Hannah Bieze, MS, RD, LD, CDCES

Hannah is a highly skilled registered dietitian and certified diabetes care and education specialist with extensive experience in pediatric diabetes care. She holds a Master of Science in Nutrition. In addition to her academic credentials, she is a licensed dietitian in South Carolina and a certified insulin pump trainer for Tandem Diabetes Care and Insulet Corporation. With 18 years of personal experience living with Type 1 Diabetes, Hannah brings a unique, patient-centered perspective to her work. She currently serves as the Pediatric Diabetes Care Coordinator for MUSC Pediatric Endocrinology, where she collaborates with healthcare teams to provide comprehensive care for children with diabetes.

CREDIT

AHEC: This program is approved for 0.15 CEU's (1.5 clock hours) by Pee Dee AHEC and meets SC AHEC Best Practice standards. Participants must attend 90% of the program and complete an evaluation in order to receive a certificate of attendance. No partial credit will be given.

Nursing: Pee Dee AHEC (Area Health Education Center) is approved as a provider of nursing continuing professional development by South Carolina Nurses Association an accredited approver by the American Nurses Credentialing Center's Commission on Accreditation. Upon successful completion of this program, attendees will receive 1.5 contact hours.

REGISTER HERE

or scan
the
QR Code



Disclosure Statement: Pee Dee AHEC's conflict of interest policy requires faculty to disclose any real or apparent commercial financial affiliations related to the content of their presentations/materials. Speakers have signed a vested interest form declaring any conflict of interest in education activities. Please see individual activities for any conflicts of interest. Provisions of these educational activities by Pee Dee AHEC does not imply endorsement by Pee Dee AHEC, SCNA or ANCC of any commercial products displayed in conjunction with activities.