

Update in the Medical Management of Heart Failure for Primary Care Providers



Co-Provided by:

**Pee Dee Area Health Education Center
& Southeastern CME Consultants, LLC**



Presented by:

Gerard C. Jebaily, M.D., MHSA, CMD
Program Director
McLeod Health Family Medicine Residency

Spencer A. Morris, Pharm.D., BCPS
President / Administrator
Southeastern CME Consultants, LLC

Educational Objectives

Upon completion of this program, participants should be able to:

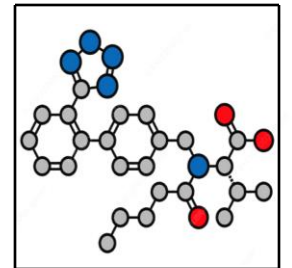
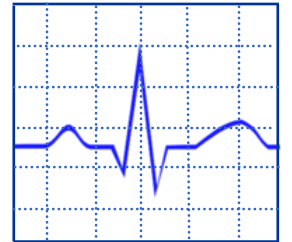
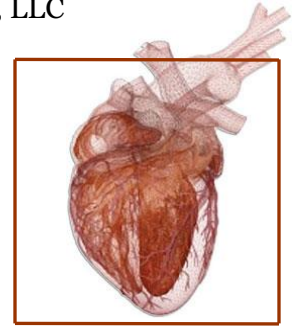
- 1) Describe the epidemiology and pathophysiology of heart failure (HF) with respect to different HF phenotypes.
- 2) Recognize social determinants of health that impact the care of patients living with HF.
- 3) Define the role of each member of the healthcare team in the medical management of HF.
- 4) Review recently published HF clinical trial information.
- 5) Discuss guideline-directed management of HF drug therapy.
- 6) Summarize the effectiveness of HF drug therapy on patient morbidity and mortality using the concept of number-needed-to-treat (NNT).

Type of Continuing Education Activity: *Knowledge*

Educational Methods: Lecture presentation with time to answer self-assessment questions and discuss clinical scenarios to include audience participation.

Target Audience: Physicians, Physician Assistants, APRNs, RNs, Pharmacists

Faculty & Program Planning Committee Disclosures: Dr. Jebaily, Dr. Morris, Dr. Howell, Ms. Parnell, and Ms. Morris declare no conflicts of interest or financial interests in any product or service mentioned in this program, including employment, gifts, stock holdings and/or honoraria.



DATE: TUESDAY, JANUARY 28, 2025

TIME: Registration & Dinner: 6:30 - 7:00 P.M.
CE Presentation: 7:00 - 9:00 P.M.

LOCATION: McLeod Health Pavilion 1st Floor
Conference Center 801 East Cheves Street, Florence, SC
29506

* Attend virtually via WebEx – The meeting link can be found in your MY REGISTRATIONS at
<https://www.scahec.net/learn/login>.

PRE-REGISTRATION INFORMATION:

Pre-registration is required through Pee Dee AHEC

Pre-register for this CPE program at the following link:
<https://www.scahec.net/learn/programs/4092>

TUITION: \$ 40.⁰⁰ for all Participants
Payment is required at time of registration.

Nursing Accreditation Statement: Pee Dee Area Health Education Center is approved as a provider of nursing continuing professional development by the South Carolina Nurses Association, an accredited approver by the American Nurses Credentialing Center's Commission on Accreditation.

Registered Nurses: This nursing continuing education awards **2.0** contact hours upon successful completion.

Advanced Practice Registered Nurses: This nursing continuing education activity awards **1.5 PH** (Pharmacology Hours) and **0.5 CH** (Contact Hours) upon successful completion.



JOINTLY ACCREDITED PROVIDER™
INTERPROFESSIONAL CONTINUING EDUCATION

"In support of improving patient care, this activity has been planned and implemented by Pee Dee AHEC and Southeastern CME Consultants, LLC. *Southeastern Continuing Medical Education Consultants, LLC*, is jointly accredited by the Accreditation Council for Continuing Medical Education (ACCME), the Accreditation Council for Pharmacy Education (ACPE), and the American Nurses Credentialing Center (ANCC), to provide continuing education for the healthcare team." This interprofessional CE activity provides **2.0** contact hours (**0.2 CEUs**) of continuing education credit for physicians, physician assistants, and pharmacists. Participants must complete an online program evaluation within 2 weeks following the program date to receive continuing education credit.